

LEVELITE SPECIFICATION SHEET

MODEL GLL 100000 DUAL FLOAT CONTROLLER

PRODUCT HIGHLIGHTS

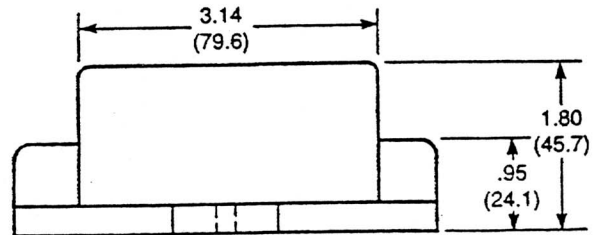
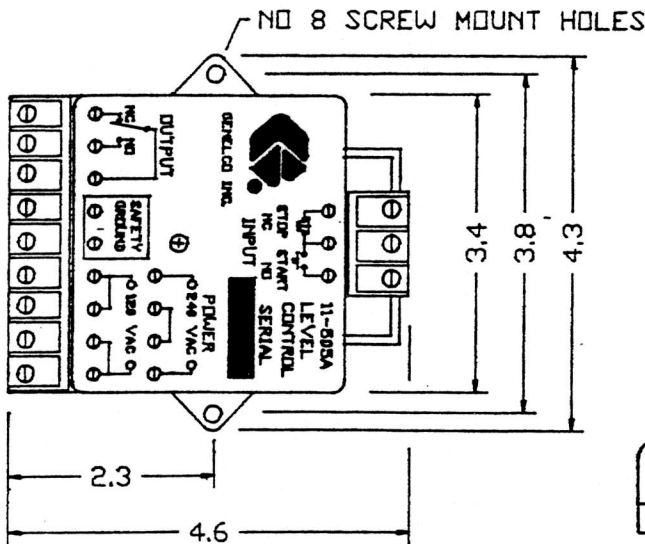
- Low Cost Pump Control
- Works With Floats
- 120 VAC Or 240 VAC Operation
- Compact

DESCRIPTION

The Dual Float Controller has been designed especially for use with customer supplied floats or displacers. It can perform single or dual channel pump control and is a very economical way to monitor your system.

SPECIFICATIONS

Power: 120 or 240 VAC, 40-62 Hz, 1.8 Watts
Weight: 9.6 oz. (272g)
Control Elements: One or two reed switches or floats (Customer Supplied)
Sense voltage: 5VDC
Sense current: 6mA
Load rating: 10 Amps at 240 VAC, 10 Amps at 30 VDC, 1/3 Hp. at 120 VAC, 1/2 Hp. at 240 VAC.
Temp. limits: -20° F to 150° F (-29° C to 66° C)
Electrical connections: Screw terminal barrier strip
Dimensions: 4.6" x 4.3" x 1.8"



Venture Measurement
 150 Venture Boulevard • Spartanburg, SC 29306
Toll Free: (800) 778-9242
Phone: (864) 574-8060 • **Fax:** (864) 574-8063

SPECIFICATIONS:

CONTROL ELEMENTS: REED SWITCHES OR EQUIVALENT

SENSE POINTS: ONE OR TWO

SENSE VOLTAGE: 12 VRMS NOM.

SENSE CURRENT: 1 MA. NOM.

LOAD RATING: 10 A, 240VAC

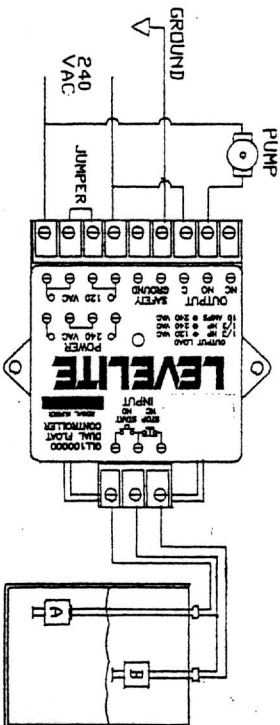
10 A 30 VDC
1/2 HP @ 120VAC
1/2 HP @ 240VAC

INPUT POWER: 120/240 VAC

60 HZ
1.8 WATTS

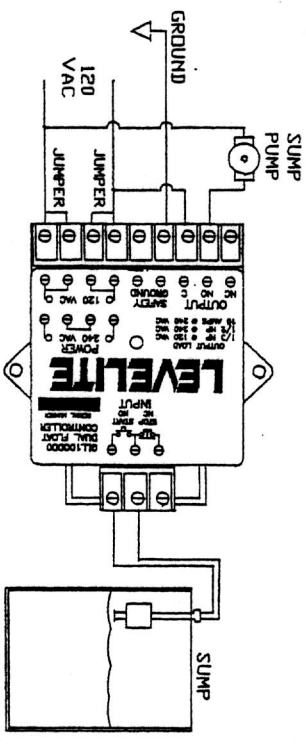
SENSE SWITCH TO CONTROLLER:
50 FEET MAX.

AMBIENT TEMPERATURE:
0 TO 150 DEGF.



EXAMPLE OF AUTOMATIC FILL WIRING.
WHEN LEVEL DROPS BELOW 'A' PUMP TURNS ON.
WHEN LEVEL RISES ABOVE 'B' PUMP TURNS OFF.
THE TOP TERMINAL (GND) WOULD DRIVE THE PUMP IN AN AUTOMATIC EMPTY SYSTEM.
NOTE ONE JUMPER SHOWN FOR 240 VAC OPERATION.

LOW VOLTAGE CONTROLLER WITH LARGE DIFFERENTIAL



EXAMPLE OF SUMP-PUMP WIRING
OUTPUT IS ACTIVE WHILE SWITCH IS WET.
NOTE TWO JUMPERS SHOWN FOR 120 VAC OPERATION.

LOW VOLTAGE SINGLE POINT CONTROLLER

DO NOT SCALE
DIMENSIONS ARE IN INCHES

